



BABY HOODIE SWEATSHIRTS  
**STSB919 - BABY CRUISER**

**The iconic babies' hoodie sweatshirt**

Medium Fit

- Set-in sleeve
- Double layered hood in single jersey
- Wider neck opening for easy dressing
- Inside back neck tape in single jersey
- Self fabric half moon at back neck
- Single needle topstitch at neckline and along hood opening
- 1x1 rib at sleeve hem and bottom hem
- Sleeve hem and bottom hem with twin needle topstitch

Combo options



WHITES



NATURAL RAW

COLORS



BUTTER

FRENCH NAVY

VOLCANO STONE

ESSENTIAL

HEATHERS



HEATHER GREY

Shell : French Terry , 85% Cotton - Organic Ring Spun Combed , 15% Polyester  
 - Recycled , Fabric washed , Light sueded , 280 GSM

Printing Specifications

For suitable print techniques, please download our printing guide

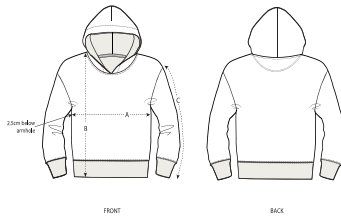
Certifications & memberships



Wash Instructions

Wash similar colours together, no ironing on print, wash and iron inside out.





| SIZES           | 6-12 M/68-80CM | 12-18 M/80-86CM | 18-24 M/86-92CM | 24-36 M/92-98CM |
|-----------------|----------------|-----------------|-----------------|-----------------|
| A Half Chest    | 29.5           | 31              | 32.5            | 33.5            |
| B Body Length   | 30.5           | 32              | 34              | 36.5            |
| C Sleeve Length | 22             | 22.5            | 24.5            | 27              |

### PACKING

| SIZES   | 6-12 M/68-80CM | 12-18 M/80-86CM | 18-24 M/86-92CM | 24-36 M/92-98CM |
|---------|----------------|-----------------|-----------------|-----------------|
| PCS/BAG | 5              | 5               | 5               | 5               |
| PCS/BOX | 30             | 30              | 30              | 30              |