

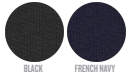


WHITES



WHITE

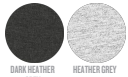
COLORS



BLACK

FRENCH NAVY

ESSENTIAL HEATHERS



DARK HEATHER GREY

HEATHER GREY

SPECIAL HEATHERS



BLACK HEATHER BLUE

MEN PANTS

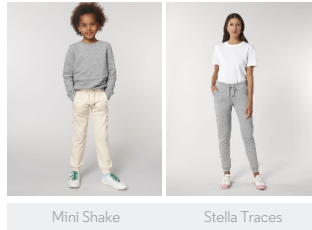
STBM519 - STANLEY STEPS

The men's jogger pants

Fitted

- Self fabric waistband
- Round drawcords in matching body colour with metal tipping
- Metal eyelets
- Single jersey on inside waistband and inside pockets (in contrast for some colours)
- Side panels in self fabric
- Welt pocket at back
- 1x1 rib at bottom leg hem
- Flatlock topstitch on all seams

Combo options



Mini Shake

Stella Traces

Shell : French Terry , 85% Cotton - Organic Ring Spun Combed , 15% Polyester - Recycled , Light sueded , 300 GSM

Printing Specifications

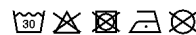
For suitable print techniques, please download our printing guide

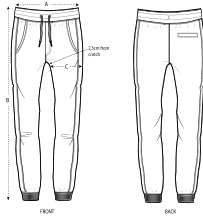
Certifications & memberships



Wash Instructions

Wash similar colours together, do not iron on print, wash and iron inside out.





SIZES		S	M	L	XL	XXL
A	Waist	38	41	44	47	50
B	Leg Length	102	104	106	108	110
C	Thigh	29.3	30	31	32.5	34

### PACKING

SIZES	S	M	L	XL	XXL
PCS/BAG	5	5	5	5	5
PCS/BOX	20	20	20	20	20