

WOMEN PADDED JACKET

STJW899 - STELLA CLIMBER WOOL-LIKE



ESSENTIAL
HEATHERS



The wool-like women's body warmer

Fitted

- Sleeveless
- High collar
- Reverse nylon zip at center front
- Zipped welt pockets with extra grosgrain puller
- Elastic tape binding at armhole
- Fully quilted
- Side panels for better shape
- Inside seams with binding finish
- Bottom hem with adjustable plastic stopper and elastic cord

Combo options



Stanley Climber Wool-Like

Shell : Plain Weave Brushed , 100% Polyester - Recycled , Fluorine-free DWR , 140 GSM

Padding : 100% Polyester - Recycled , 175 GSM

Lining : Plain Weave , 100% Polyester - Recycled , Fluorine-free DWR , 75 GSM

Printing Specifications

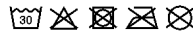
For suitable print techniques, please download our printing guide

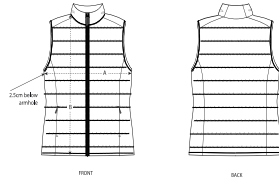
Certifications & memberships



Wash Instructions

Wash similar colours together, no ironing, wash inside out. Close all zips before washing.





SIZES		XS	S	M	L	XL	XXL
A	Half Chest	47	50	53	56	59	62
B	Body Length	58	60	62	64	66	68

PACKING

SIZES	XS	S	M	L	XL	XXL
PCS/BAG	5	5	5	5	5	5
PCS/BOX	10	10	10	10	10	10