



WOMEN CREW NECK SWEATSHIRTS
STSW873 - STELLA CROPSTER

The women's cropped crew neck sweatshirt

Medium Fit

- Set-in sleeve
- 1x1 rib at neck collar, sleeve hem and bottom hem
- Inside herringbone back tape
- Self fabric half moon at back neck
- Twin needle topstitch on all seams

Combo options



Stella Cropster Wave Terry

WHITES



WHITE

COLORS



BLACK

BUTTER

SERENE BLUE

FRENCH NAVY

ORCHID FLOWER

ESSENTIAL

HEATHERS



HEATHER GREY

Shell : French Terry , 85% Cotton - Organic Ring Spun Combed , 15% Polyester
 - Recycled , Fabric washed , Light sueded , 300 GSM

Printing Specifications

For suitable print techniques, please download our printing guide

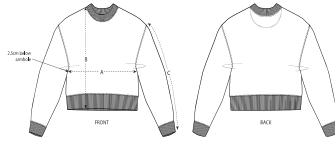
Certifications & memberships



Wash Instructions

Wash similar colours together, no ironing on print, wash and iron inside out.





SIZES		XS	S	M	L	XL	XXL
A	Half Chest	47.5	50	53	56	59	62
B	Body Length	49.5	51.5	53.5	55.5	56.5	57.5
C	Sleeve Length	50	50	51	51.5	52	52

PACKING

SIZES		XS	S	M	L	XL	XXL
	PCS/BAG	5	5	5	5	5	5
	PCS/BOX	20	20	20	20	20	20