

WOMEN PANTS  
**STBW129 - STELLA TRACES**

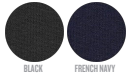


WHITES



WHITE

COLORS

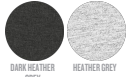


BLACK

FRENCH NAVY

ESSENTIAL

HEATHERS



DARK HEATHER GREY

HEATHER GREY

**The women's jogger pants**

Fitted

- Self fabric waistband
- Round drawcords in matching body colour with metal tipping
- Metal eyelets
- Single jersey on inside waistband and inside pockets (in contrast for some colours)
- Side panels in self fabric
- Patch pocket at back
- 1x1 rib at bottom leg hem
- Flatlock topstitch on all seams

Combo options



Mini Shake

Stanley Steps

Shell : French Terry , 85% Cotton - Organic Ring Spun Combed , 15% Polyester - Recycled , Light sueded , 300 GSM

Printing Specifications

For suitable print techniques, please download our printing guide

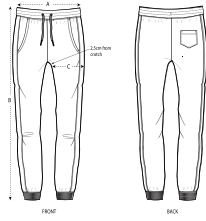
Certifications & memberships



Wash Instructions

Wash similar colours together, do not iron on print, wash and iron inside out.





SIZES		XS	S	M	L	XL
A	Waist	38	40	42.5	45	47.5
B	Leg Length	96	98	100	101	102
C	Thigh	25.8	26.5	27.5	29	30.5

## PACKING

SIZES	XS	S	M	L	XL
PCS/BAG	5	5	5	5	5
PCS/BOX	20	20	20	20	20