

WOMEN PADDED JACKET

STJW897 - STELLA VOYAGER WOOL-LIKE



ESSENTIAL
HEATHERS



The wool-like women's padded jacket

Fitted

- Set-in sleeve
- High collar with detachable hood with matte metal hidden snaps
- Hood opening and bottom hem with adjustable plastic stopper and elastic cord
- Reverse nylon zip at center front
- Zipped welt pockets with extra grosgrain puller
- Fully quilted
- Side panels for better shape
- Soft 1x1 rib at sleeve hem
- Inside seams with binding finish

Combo options



Stanley Voyager Wool-Like

Shell : Plain Weave Brushed , 100% Polyester - Recycled , Fluorine-free DWR , 140 GSM

Padding : 100% Polyester - Recycled , 175 GSM

Lining : Plain Weave , 100% Polyester - Recycled , Fluorine-free DWR , 75 GSM

Printing Specifications

For suitable print techniques, please download our printing guide

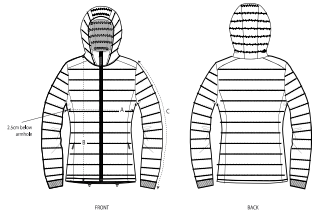
Certifications & memberships



Wash Instructions

Wash similar colours together, no ironing, wash inside out. Close all zips before washing.





| SIZES | XS | S | M | L | XL | XXL |
|-----------------|------|------|------|------|------|------|
| A Half Chest | 47 | 50 | 53 | 56 | 59 | 62 |
| B Body Length | 59.5 | 61.5 | 63.5 | 65.5 | 67.5 | 69.5 |
| C Sleeve Length | 63 | 64 | 65 | 66 | 67 | 67 |

PACKING

| SIZES | XS | S | M | L | XL | XXL |
|---------|----|---|---|---|----|-----|
| PCS/BAG | 5 | 5 | 5 | 5 | 5 | 5 |
| PCS/BOX | 5 | 5 | 5 | 5 | 5 | 5 |